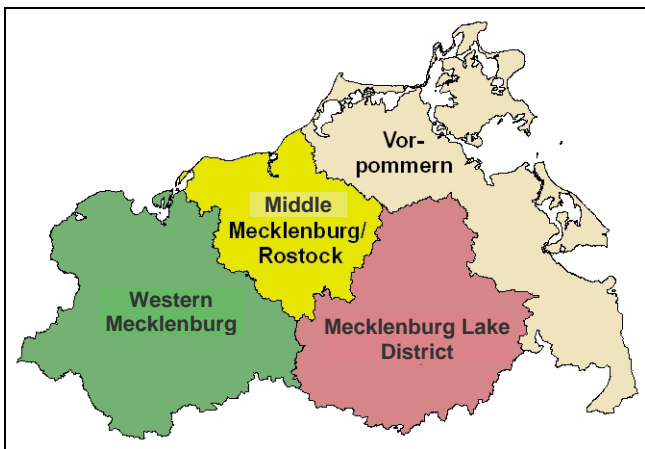


Expert landscape framework plan (GLRP) for the planning regions of the federal state Mecklenburg-Vorpommern

The Nature Conservation Act of Mecklenburg-Vorpommern provides for a three-level landscape planning procedure. The Expert Landscape Program of Mecklenburg-Vorpommern is released by the Ministry for Agriculture, Environment and Consumer Protection on a scale of 1:250.000 and presents statewide key-note objectives. More detailed, Expert Landscape Framework Plans (Gutachtlicher Landschaftsrahmenplan, GLRP) are developed by the State Authority for Environment, Nature Protection and Geology (Landesamt für Umwelt, Naturschutz und Geologie, LUNG) for all four planning regions of the federal state Mecklenburg-Vorpommern on a scale of 1:100.000. At the lowest level, local authorities prepare municipal landscape plans on a scale of 1:10.000 when developing or updating local land use plans.



Planning regions in Mecklenburg-Vorpommern

The first GLRPs of the four planning regions were released in the years 1996-1998. In the meantime, land use requirements (e. g. the increasing use of renewable energy sources) have changed as well as the requirements posed by the legislator (e. g. regarding biotope integration). It became important to implement the European network of protected areas "Natura 2000" and to consider the changing legal framework of the common agriculture policy of the European Union. Furthermore, extensive data sets have been gathered in the past decade and are now available for integration in the planning process. As an example, the statewide mapping of protected habitats has been finalized in 2007. Since 2004, the methodology for updating the GLRP has been further developed and the document structure was consequentially redefined.

The first update of the GLRP has been released by LUNG in 2007 for the planning region Middle Mecklenburg/ Rostock and in 2008 for the region Western Mecklenburg.

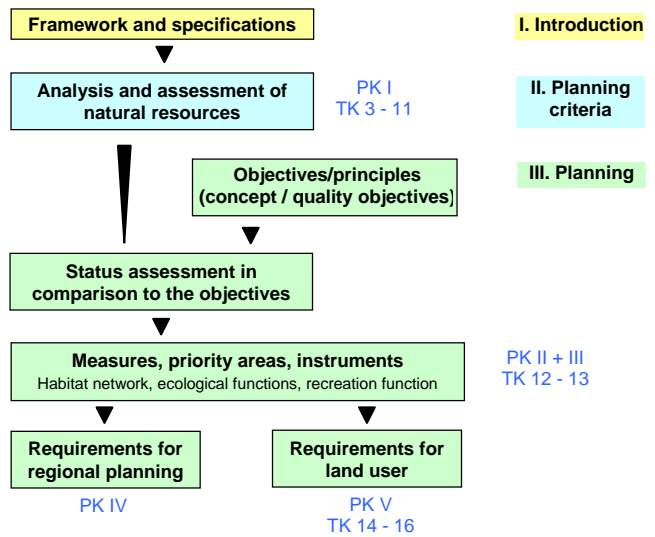
Planning region	First edition	Second edition
Western Mecklenburg	1998	2008
Middle Mecklenburg/ Rostock	1996	2007
Vorpommern	1996	2009
Mecklenburg Lake District	1997	planned for 2011

Release of expert regional landscape plans

The development of the GLRP is based on a comprehensive analysis of the current state of the natural resources:

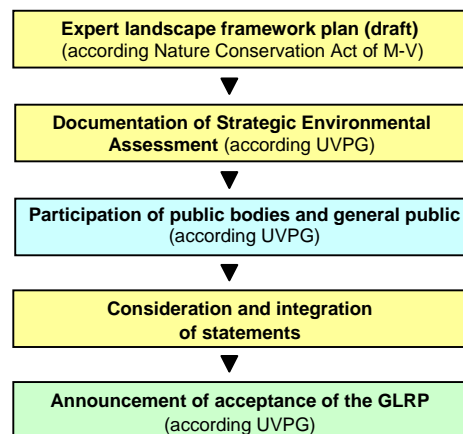
- soil,
- water,
- climate/air,
- species and habitats,
- landscape scenery,
- open landscape areas.

This analysis of status and development trends together with the specific development concepts and quality objectives build the basis to derive needs and measures for preserving habitat networks, ecological functions and the recreation function of the landscape. The update procedure of the GLRP follows strictly this method, which is also reflected in the related mapping concept.

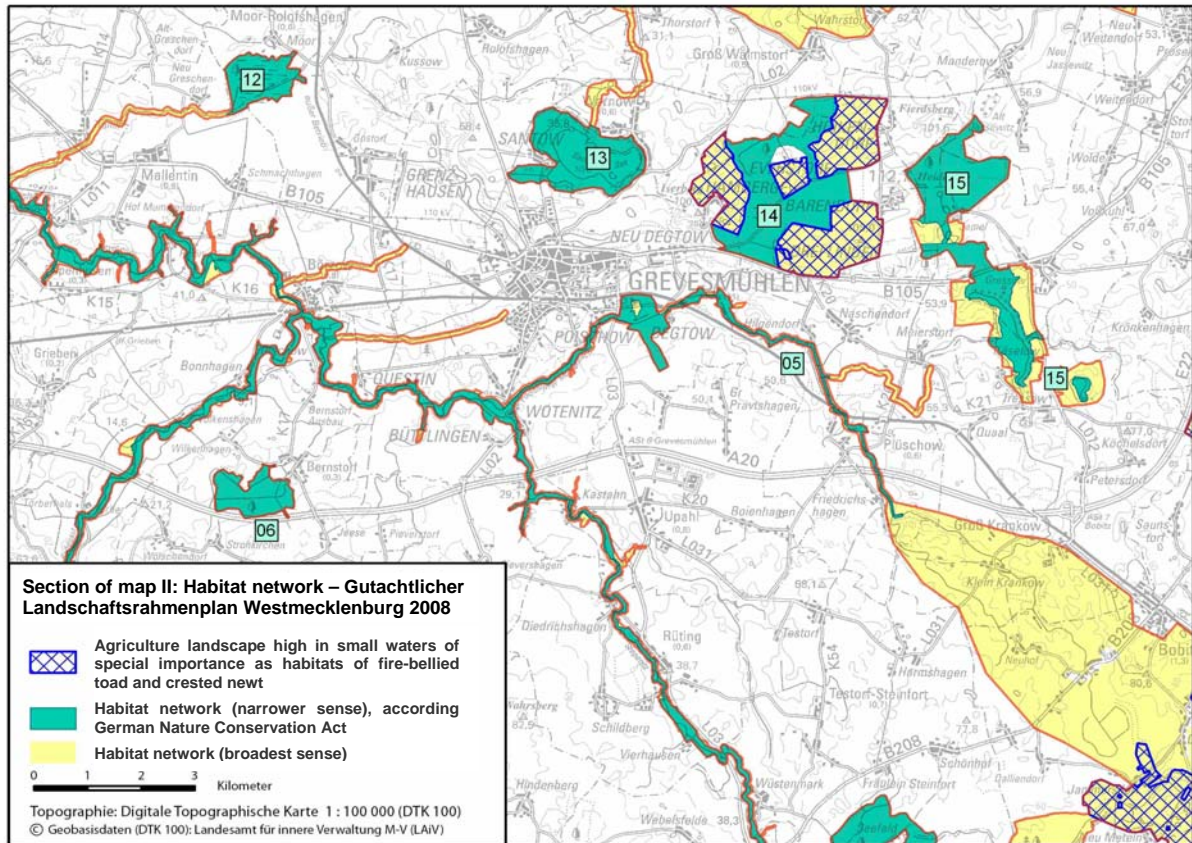


Structure and planning procedure of expert landscape framework plans (PK = planning map, TK = text map)

Prior publication, a participation procedure ensures that interests of public bodies and the general public are integrated. During this procedure a strategic environmental assessment (Umweltverträglichkeitsprüfung, UVP) was undertaken. Documents about the UVP as well as further documents on the procedure of participation are available on the website of LUNG.



Planning procedure starting from draft version until publication



Expert Landscape Framework Plan of Western Mecklenburg (2008): Extract of planning map II – Habitat network planning

The GLRP is suitable for many applications:

- Planning for nature conservation and thereby background information for the work of nature conservation authorities,
- Interdisciplinary presentation of nature protection needs and measures for other plannings, enabling authorities and services to contribute to the goals of nature conservation in the frame of their work,
- Expert contribution for regional planning,
- Information of general public about needs and objectives of nature conservation,
- Important background for the development of local landscape plans,
- Summary of expert data sets and planning statements for usage in approval procedures and licensing procedures as well as efficient implementation of Strategic Environmental Assessments.

Because the GLRP for the four planning regions are developed by one authority (LUNG), the application of a uniform and coherent methodology is ensured. Once the update process is complete, statewide consistent expert maps will be available concerning species and habitats, habitats networking as well as for detailed planning objectives and respective measures. The specialist agency applies special sectoral planning's e. g. derivation of habitat networks or regional minimum density of landscape elements necessary for biotope integration (according Federal Act for Nature Conservation) as an integrated part of landscape planning. To ensure a high degree of local exactitude and practical relevance, the expert knowledge of local authorities is intensively integrated in the process i.e.

local nature conservation authority, district agencies for environment and nature as well as the administration of the large-scale nature reserves. Due to the lack of municipal landscape plannings, the GLRP comprises the most precise, area-wide available planning basis for almost 80 % of the federal state Mecklenburg-Vorpommern.



Title page of ring binder of the GLRP update of Western Mecklenburg 2008

Outlook: The update GLRP of the planning region Vorpommern was recently published, at the end of 2009. The development of the GLRP for Mecklenburg Lakes started in 2008 and will be finished in 2011. Detailed information on landscape planning, especially on Expert landscape framework plans and on the status of the current public participation procedure are available on the internet presence of LUNG (under „Fachinformationen“ > „Natur und Landschaft“ > „Landschaftsplanung“).